

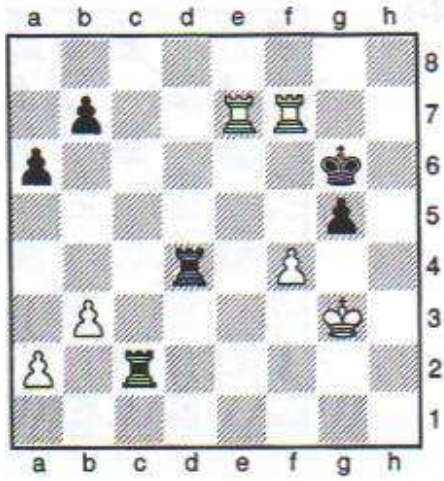


Hallo, liebe Schachkinder,
im Turm + Bauern -Endspiel sollten die Türme möglichst hinter den eigenen Bauern stehen.
Dazu ein kleiner Spruch von Herrn Starke:
Türme soll'n **des Gegners Bauern** stets **von hinten** gut belauern;
auch um **eigne** voranzutreiben, soll der **Turm dahinter** bleiben.

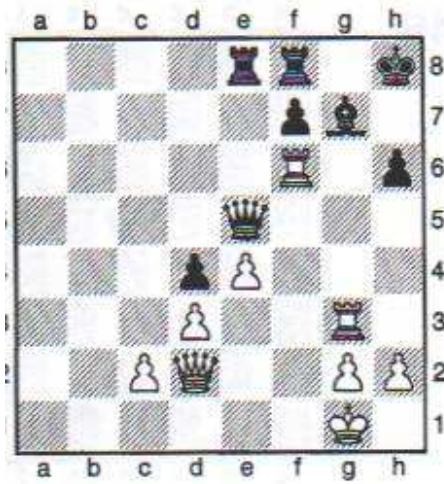


Bleibt alle gesund!
Es grüßt Euch Michael Apitzsch

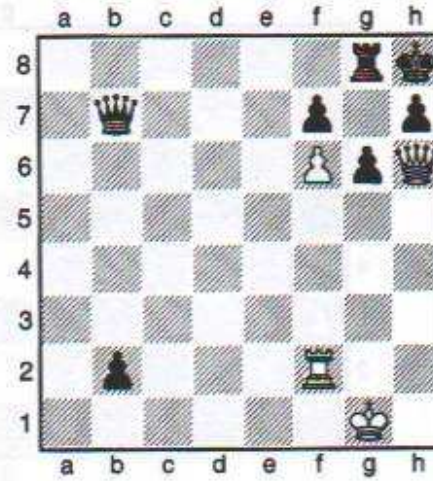
Taktik für Schulschach, Matt in 2 Zügen



32



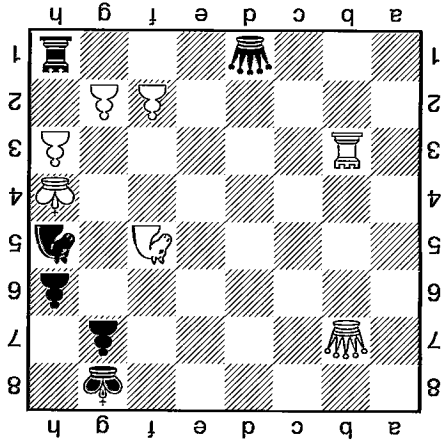
34



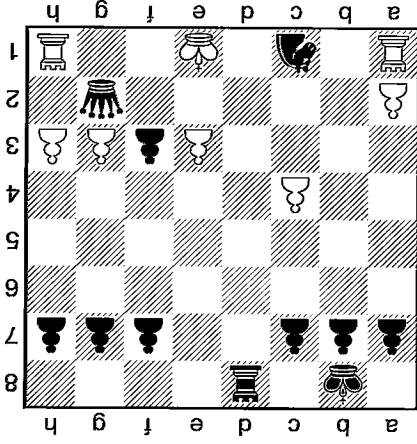
36



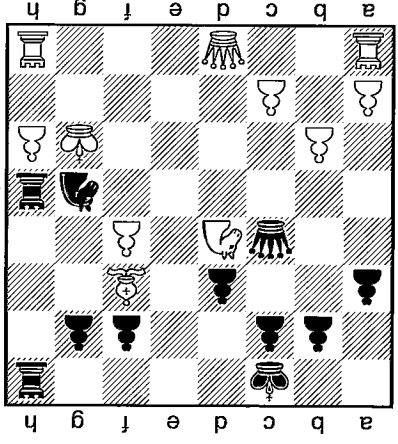
12. Schwarz am Zug



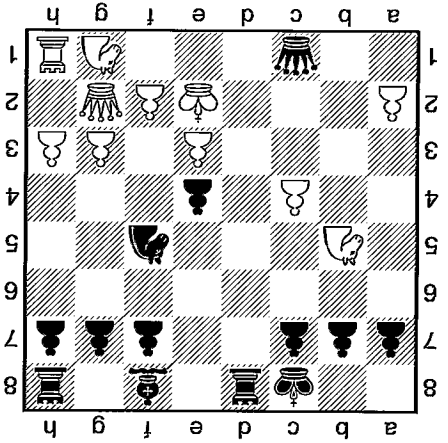
15. Schwarz am Zug



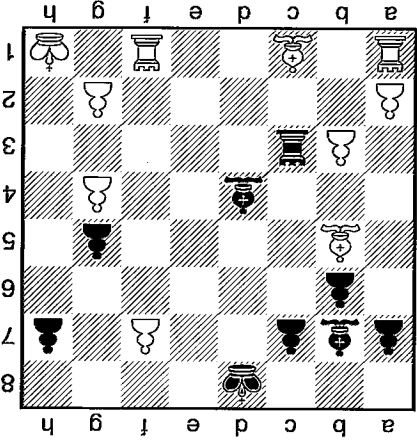
18. Schwarz am Zug



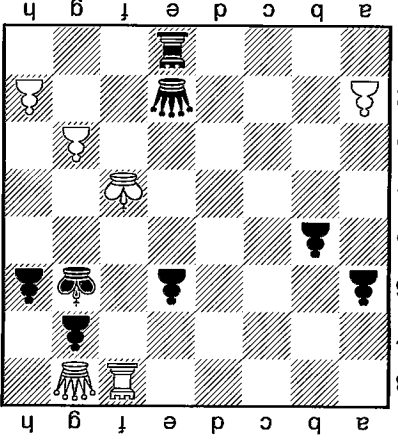
11. Schwarz am Zug



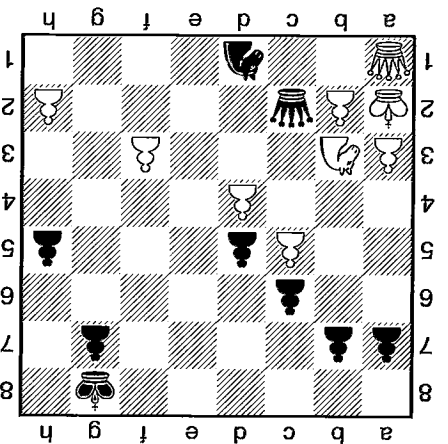
14. Schwarz am Zug



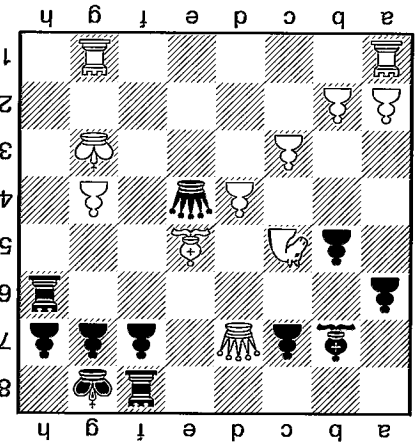
17. Schwarz am Zug



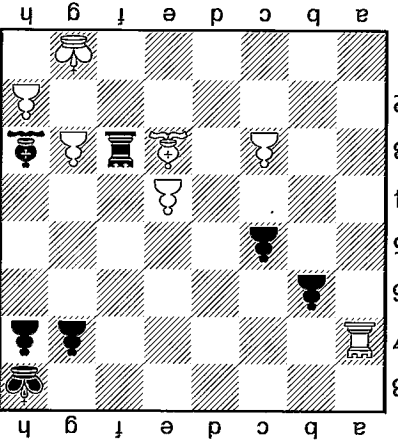
10. Schwarz am Zug



13. Schwarz am Zug



16. Schwarz am Zug

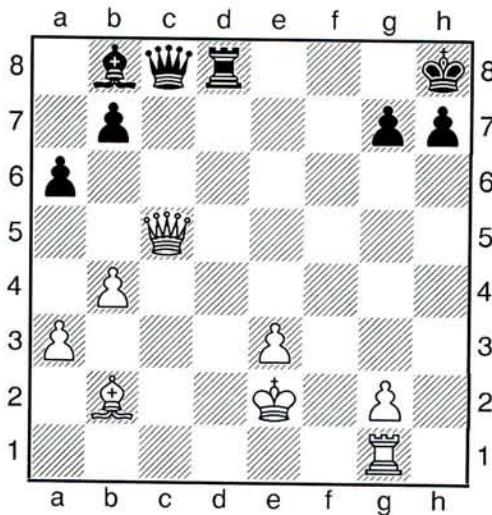


Nach der Methode von Paul Gaffron

Taktik Matt in 1 Zug

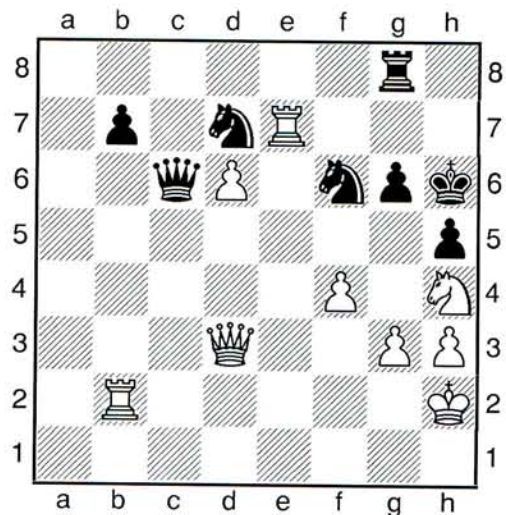


13

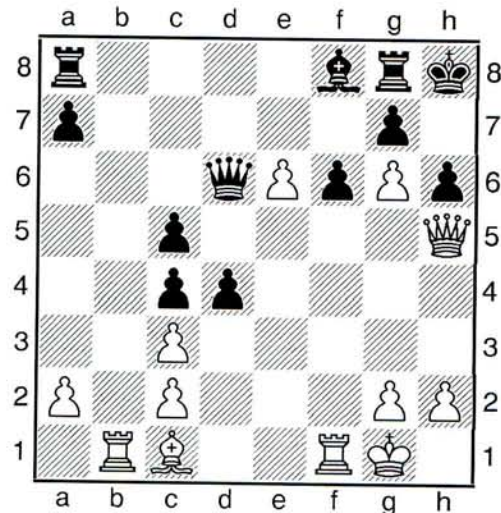


S

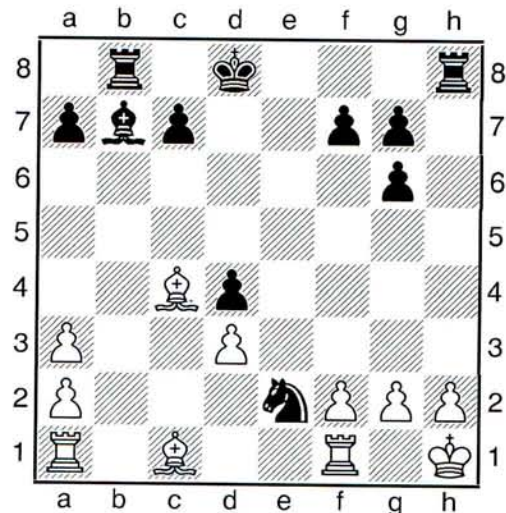
14



15

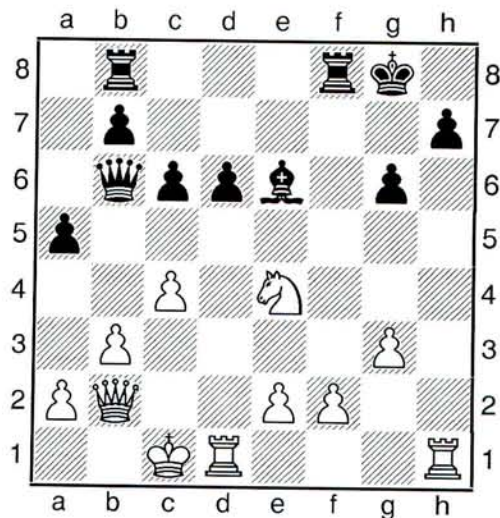


16



S

17



18

