



Weiß am Zug

Hallo, liebe Schachkinder,

hier ist ein Schachspruch über die Fesselung (ist eine Bedrohung) von Herrn Starke:

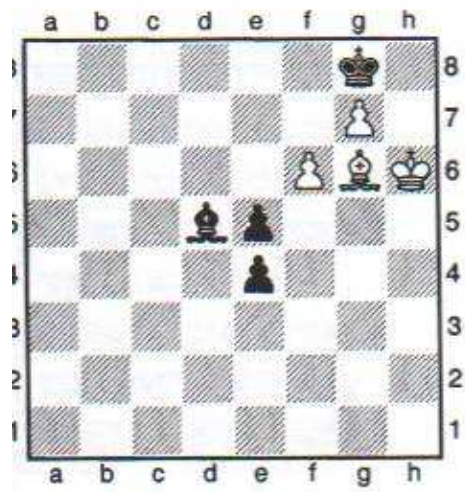
"Ist die Fesselung nicht echt, staunt man manchmal auch nicht schlecht!"

Ich wünsche Euch einen guten Start in die Woche.

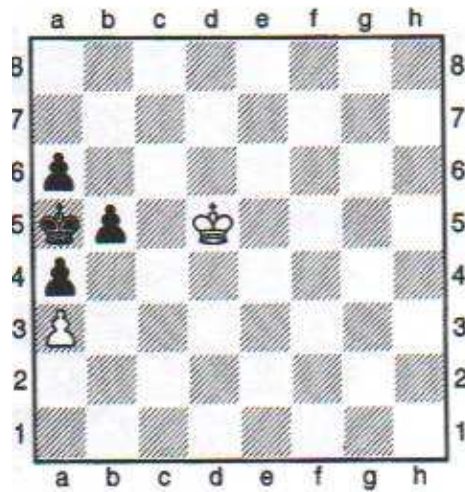


Es grüßt Euch Michael Apitzsch

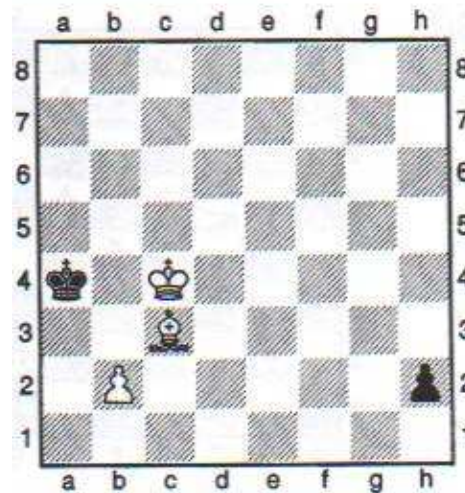
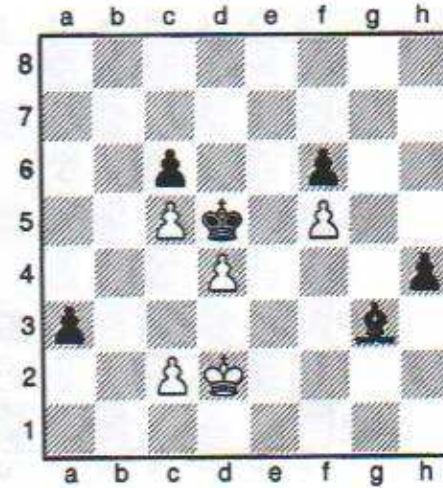
i) Taktik für Schulschach, Matt in 2 Zügen



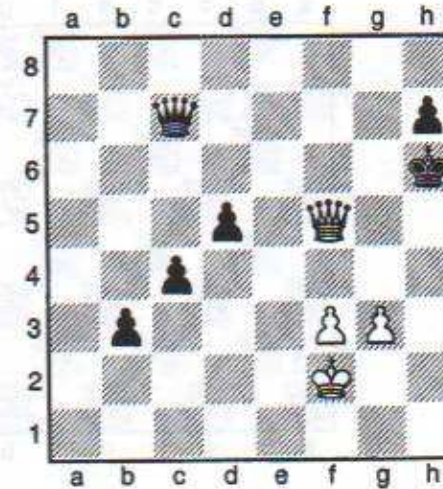
44



46



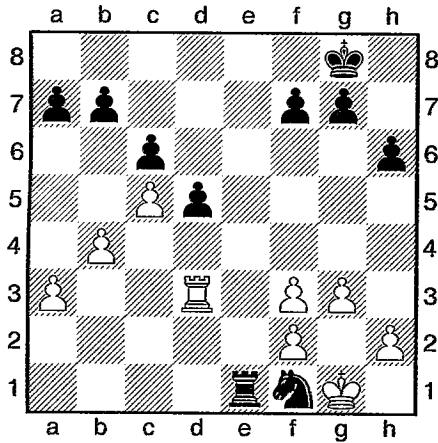
48



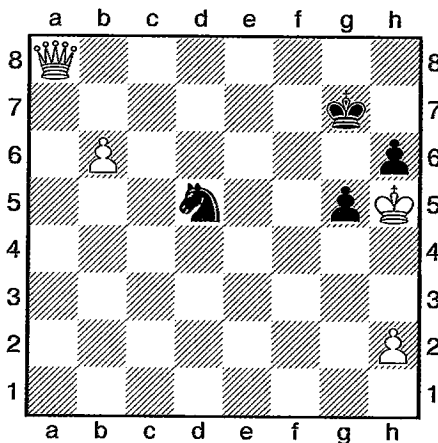


Taktik Matt in 1 Zug

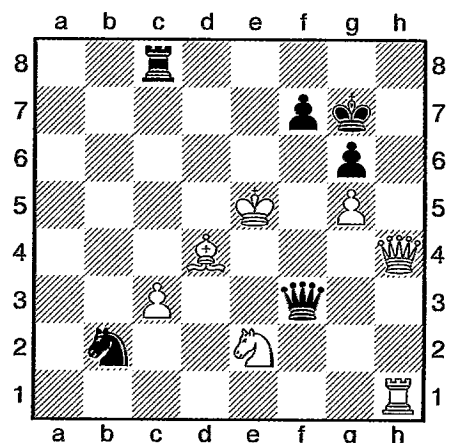
Nach der Methode von Paul Gaffron



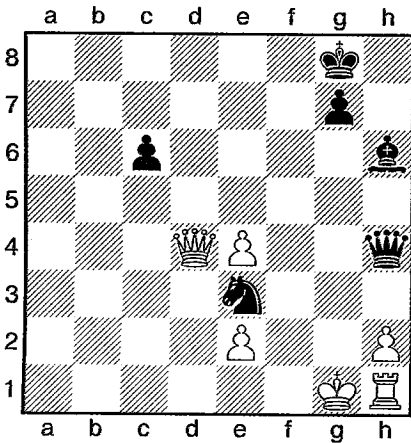
10. Schwarz am Zug



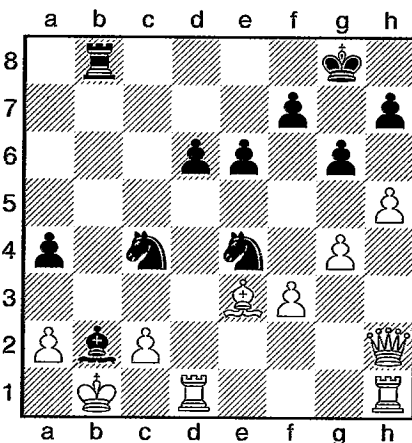
13. Schwarz am Zug



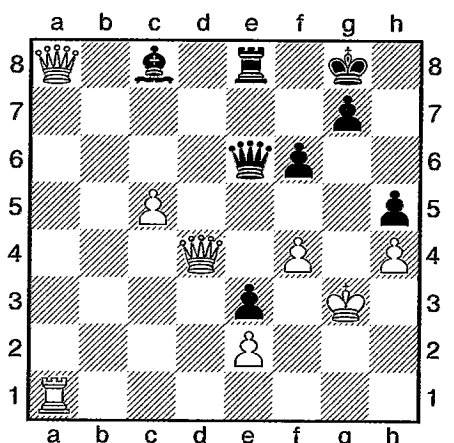
16. Schwarz am Zug



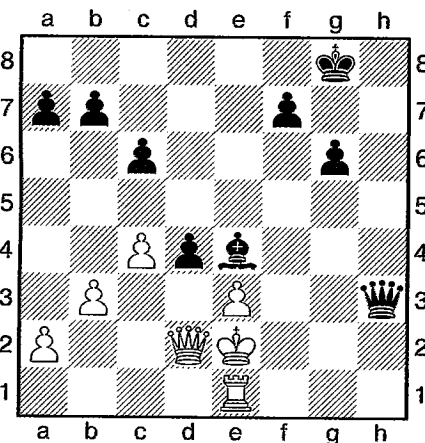
11. Schwarz am Zug



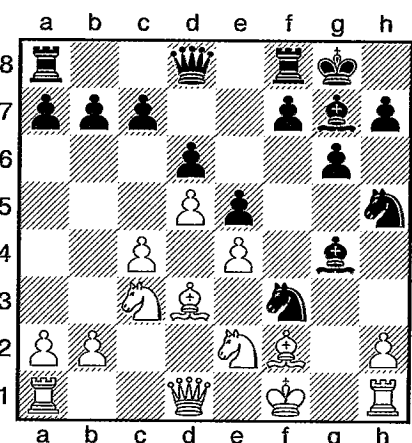
14. Schwarz am Zug



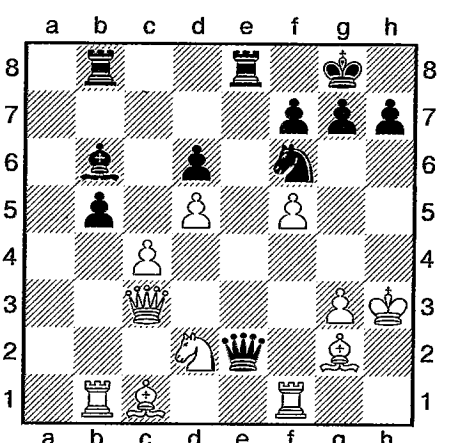
17. Schwarz am Zug



12. Schwarz am Zug



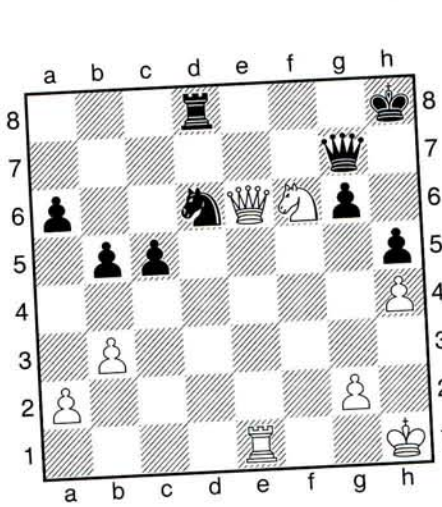
15. Schwarz am Zug



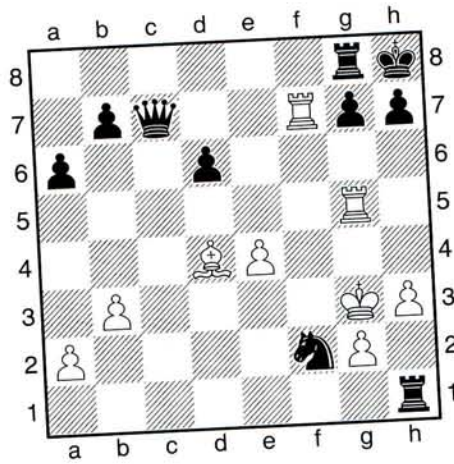
18. Schwarz am Zug

Taktik für Fortgeschrittene und Vereinsschach

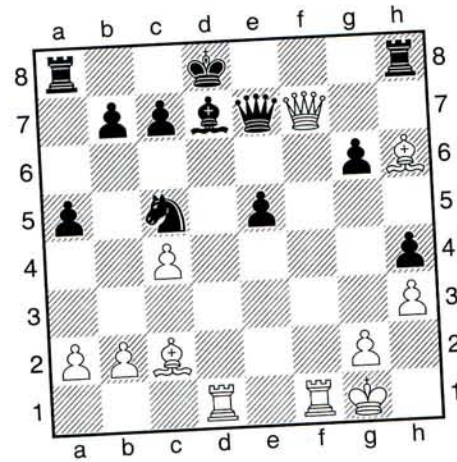
Nach der Methode von Paul Gaffron



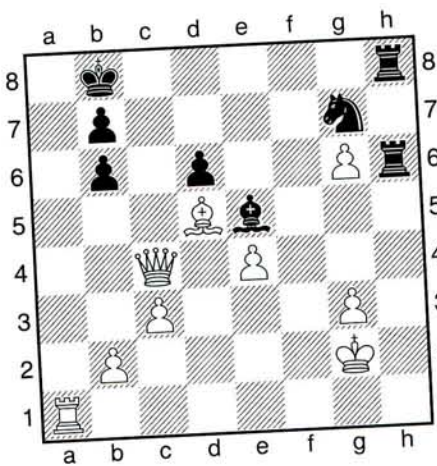
1. Weiß am Zug



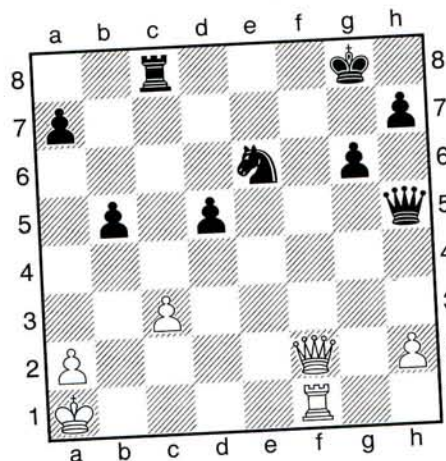
4. Weiß am Zug



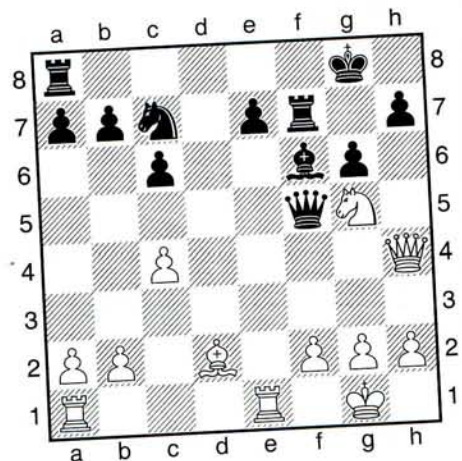
7. Weiß am Zug



2. Weiß am Zug

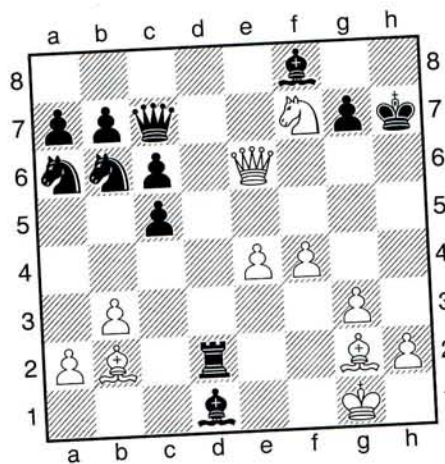


5. Weiß am Zug

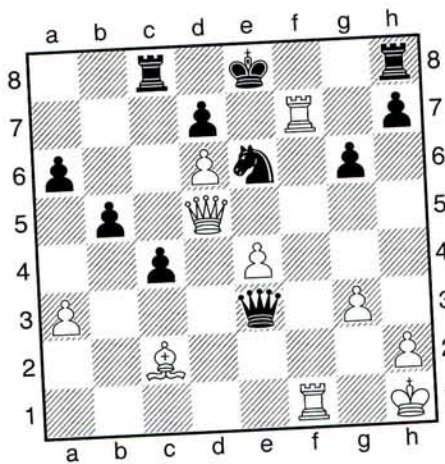


8. Weiß am Zug

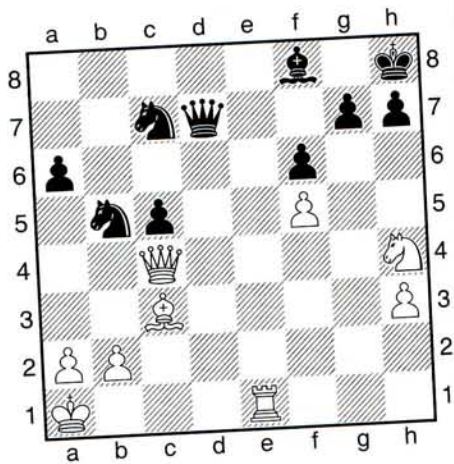
Titeldiagramm



3. Weiß am Zug



6. Weiß am Zug



9. Weiß am Zug