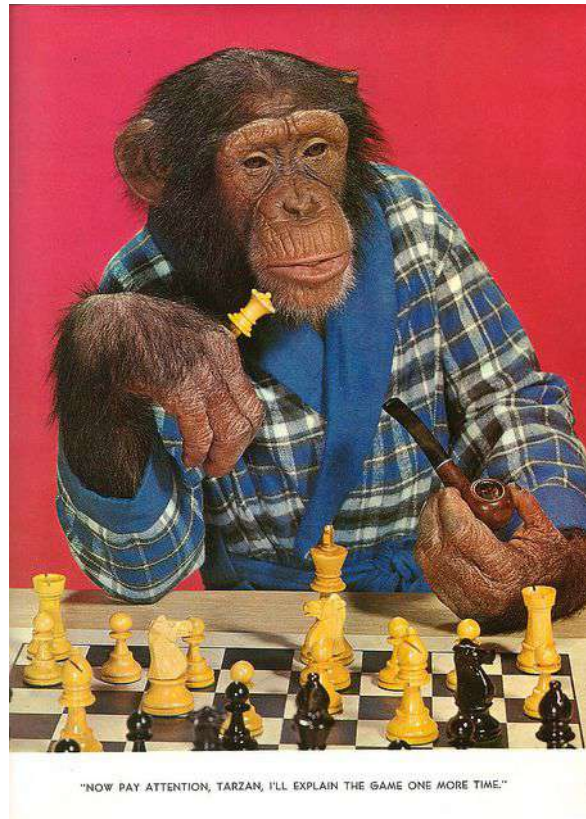


Hallo, liebe Schachkinder,



hier ist ein Schachgedicht:

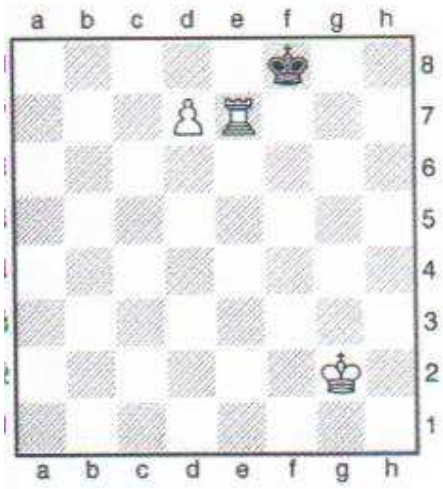
Welt ist ein Schachbrett, Tag und Nacht geschrägt  
Wo Schicksal Menschen hin und her bewegt  
Sie durcheinanderschiebt, Schach bietet, schlägt  
Und nacheinander in die Schachtel legt.

*Omar Criyam*

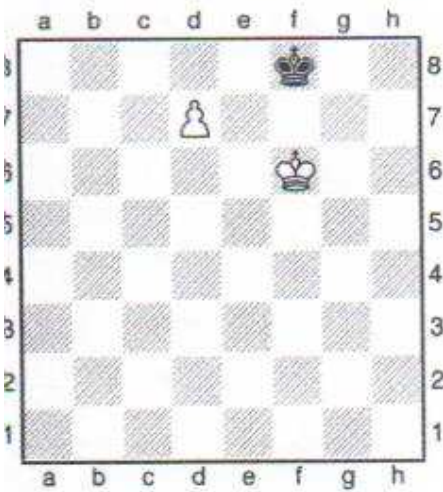
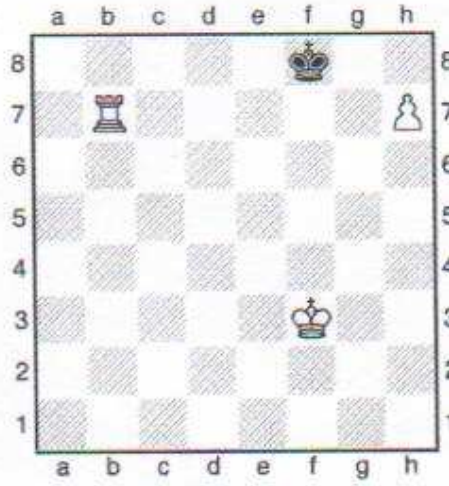


Bleibt alle gesund! Es grüßt Euch Michael Apitzsch

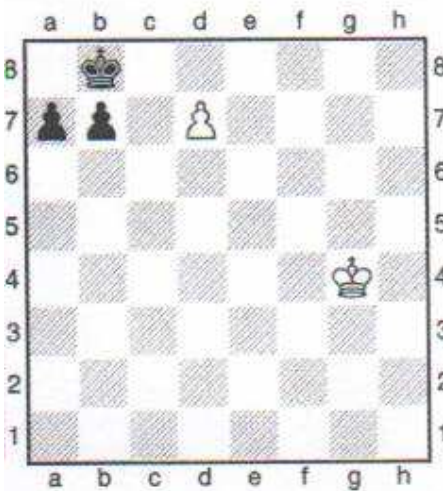
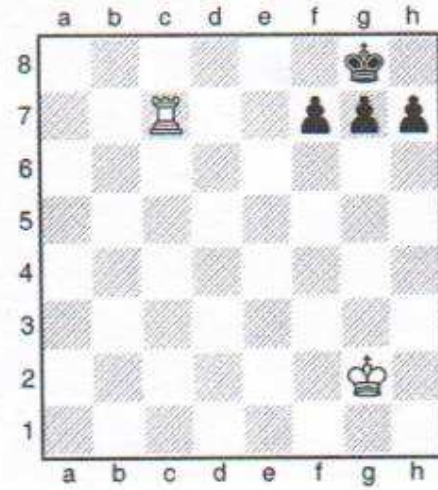
) Taktik für Schulschach, Matt in 1 Zug



38



40

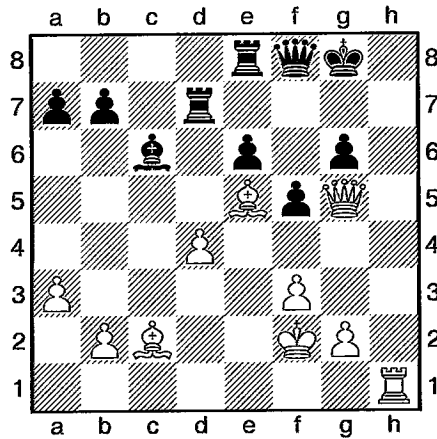


42

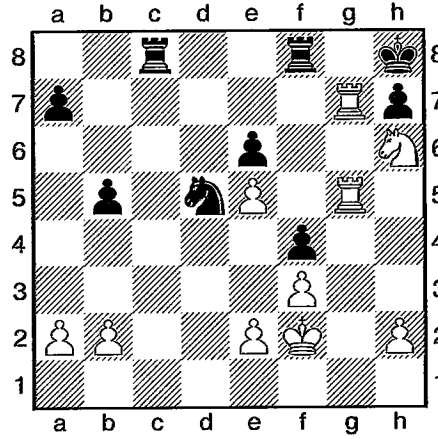


# Taktik Matt in 2 Zügen

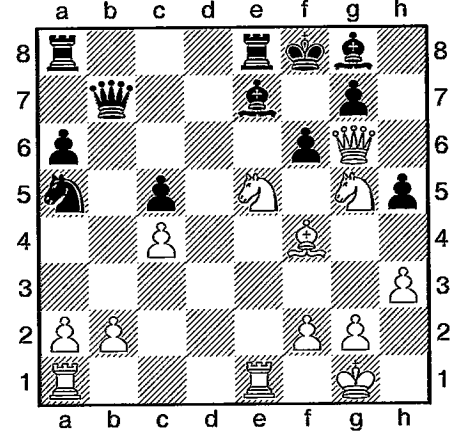
Nach der Methode von Paul Gaffron



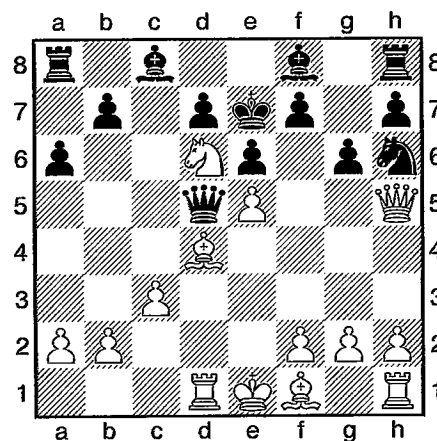
1. Weiß am Zug



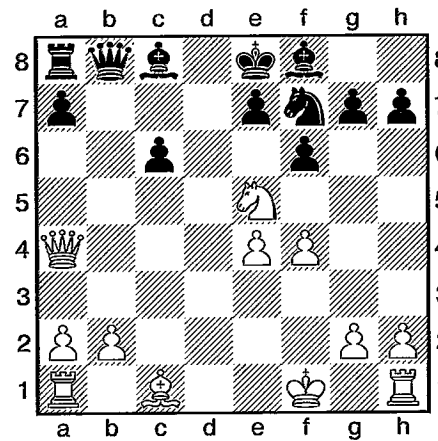
4. Weiß am Zug



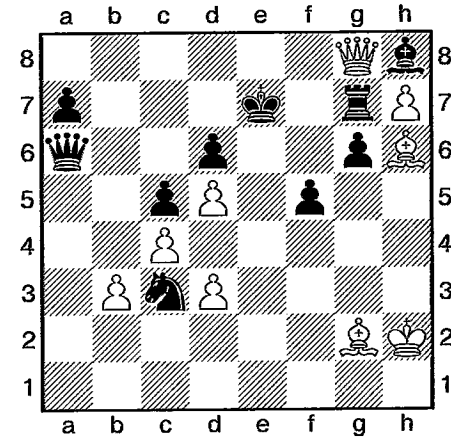
7. Weiß am Zug



2. Weiß am Zug

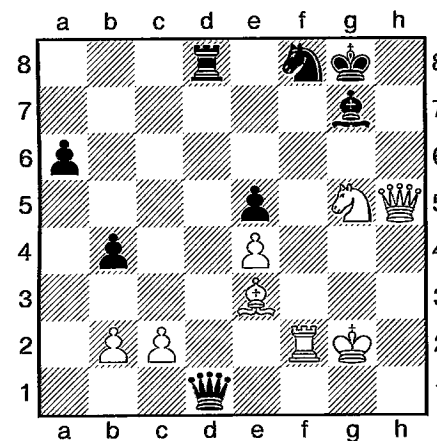


5. Weiß am Zug

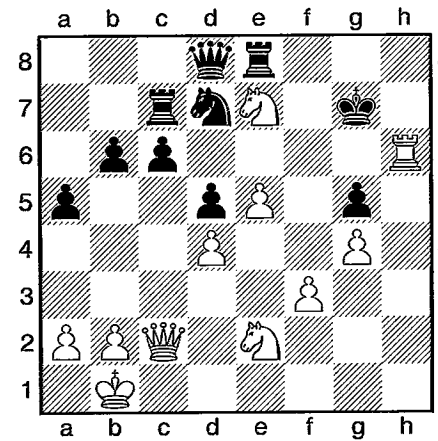


8. Weiß am Zug

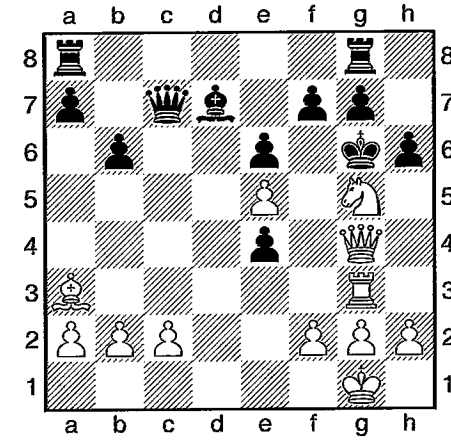
**Titeldiagramm**



3. Weiß am Zug

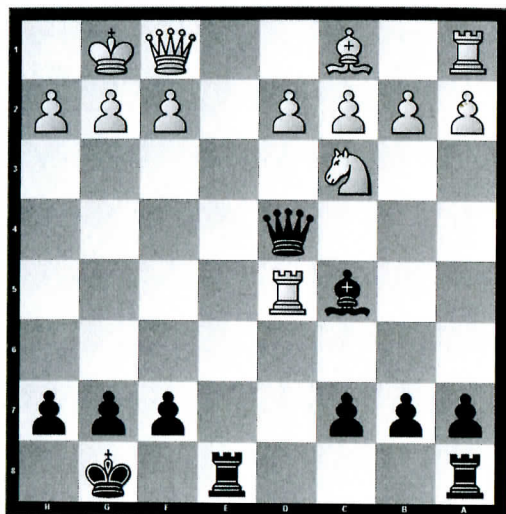


6. Weiß am Zug



9. Weiß am Zug

## Aufgabe 39

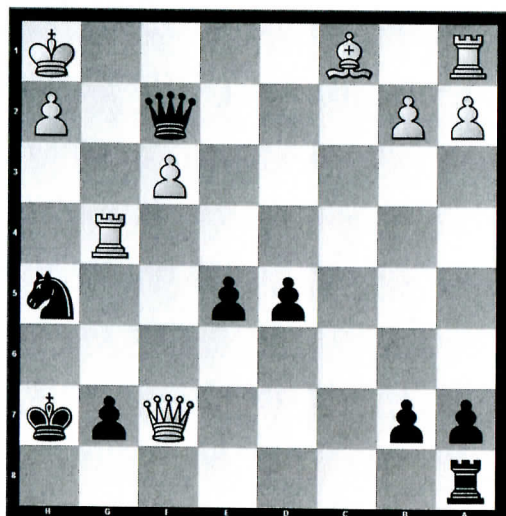


Schwierigkeitsgrad:  
ELO 2360

**Schwarz am Zug!**

Danielsson -  
Blomberg  
Sweden

## Aufgabe 40

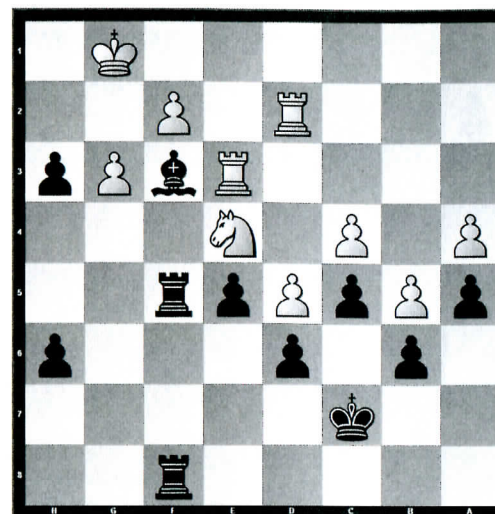


Schwierigkeitsgrad:  
ELO 1366

**Schwarz am Zug!**

Pirrott -  
Hertneck  
Germany

## Aufgabe 41

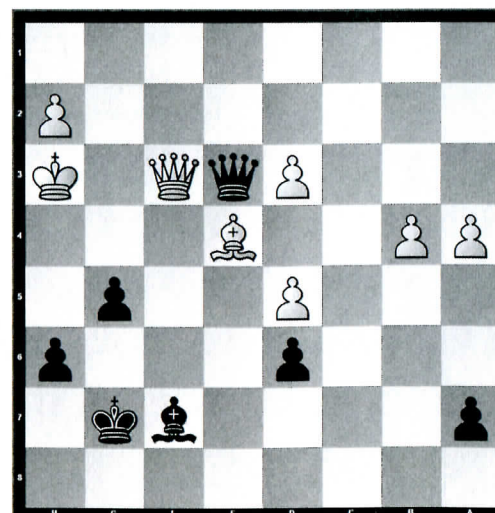


Schwierigkeitsgrad:  
ELO 1370

**Schwarz am Zug!**

Wojtkiewicz, Aleksander -  
Andersson, Ulf  
Haninge 1990

## Aufgabe 42



Schwierigkeitsgrad:  
ELO 1374

**Schwarz am Zug!**

Larsen, Bent -  
Spassky, Boris  
Linares 1981